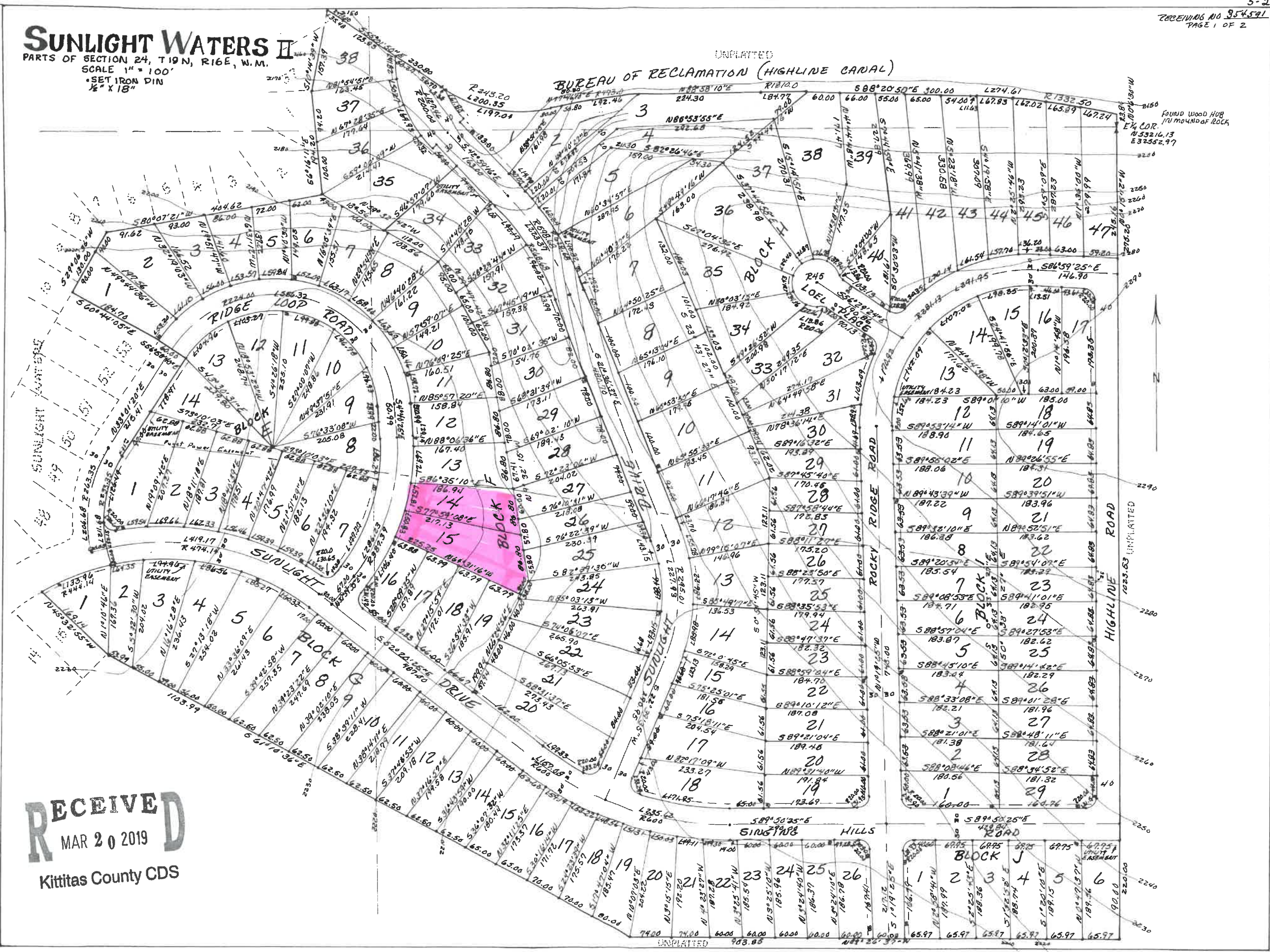


SUNLIGHT WATERS II

PARTS OF SECTION 24, T19N, R16E, W.M.
SCALE 1" = 100'
• SET IRON PIN
1/2" X 18"

UNPLATTED
BUREAU OF RECLAMATION (HIGHLINE CANAL)



RECEIVED
MAR 20 2019
Kittitas County CDS